

- 29 NHS AAA Screening Programme. https://www.gov.uk/government/uploads/system/uploads/attachment_data/file/501234/NAAASP_nurse_practice_guidance_Feb_2016.pdf. [Accessed 14 November 2016].
- 30 Zarrouk M, Lundqvist A, Holst J, Troeng T, Gottsater A. Cost-effectiveness of Screening for Abdominal Aortic Aneurysm in Combination with Medical Intervention in Patients with Small Aneurysms. *Eur J Vasc Endovasc Surg* 2016 Jun;**51**(6):766–73.
- 31 Antithrombotic Trialists' (ATT) Collaboration, Baigent C, Blackwell L, Collins R, Emberson J, Godwin J, et al. Aspirin in

the primary and secondary prevention of vascular disease: collaborative meta-analysis of individual participant data from randomised trials. *Lancet* 2009 May 30;**373**(9678):1849–60.

- 32 Banach M, Rizzo M, Toth PP, Farnier M, Davidson MH, Al-Rasadi K, et al. Statin intolerance - an attempt at a unified definition. Position paper from an International Lipid Expert Panel. *Expert Opin Drug Saf* 2015 Jun;**14**(6):935–55.
- 33 Lokhandwala J, Best PJ, Henry Y, Berger PB. Allergic reactions to clopidogrel and cross-reactivity to other agents. *Curr Allergy Asthma Rep* 2011 Feb;**11**(1):52–7.

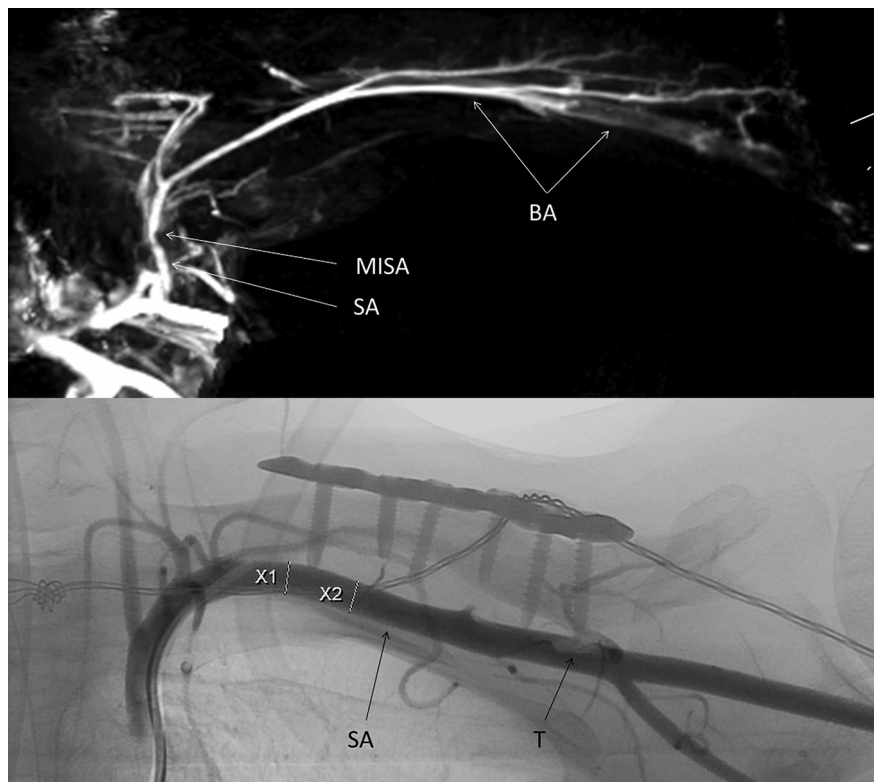
Eur J Vasc Endovasc Surg (2017) 54, 122

COUP D'OEIL

Arm Ischaemia due to Clavicular Osteosynthesis

P. Konstantiniuk^{*}, T. Cohnert

Medical University of Graz, Department of Surgery, Division of Vascular Surgery, Austria



A 38 year old woman complained of sensory loss in her left arm 4 years after clavicular osteosynthesis. Pre-operative MRA (arm elevated) indicated metal induced susceptibility artifact (MISA) of the most medial screw compressing the subclavian artery (SA) with embolic occlusion of the brachial artery (BA). Thrombectomy was successfully performed via a cubital approach. A precautionary transfemoral angiogram was undertaken just prior to screw removal in case a stent graft would be required and showed appositional thrombus (T) corresponding to the most lateral screw (arm in adduction). Length, direction, and duration of the screws in situ were crucial for the development of the ischaemia.

^{*} Corresponding author.

E-mail address: peter.konstantiniuk@medunigraz.at (P. Konstantiniuk).

1078-5884/© 2017 European Society for Vascular Surgery. Published by Elsevier Ltd. All rights reserved.

<http://dx.doi.org/10.1016/j.ejvs.2017.03.004>