

- downstream aorta after frozen elephant trunk implantation. *Eur J Cardiothorac Surg* 2018;**54**:375–81.
- 11 Dohle DS, Tzagakis K, Janosi RA, Benedik J, Kuhl H, Penkova L, et al. Aortic remodelling in aortic dissection after frozen elephant trunkdagger. *Eur J Cardiothorac Surg* 2016;**49**:111–7.
 - 12 Kreibich M, Bunte D, Berger T, Votsch A, Rylski B, Krombholz-Reindl P, et al. Distal stent graft-induced new entries after the frozen elephant trunk procedure. *Ann Thorac Surg* 2020 Mar 16. doi: 10.1016/j.athoracsur.2020.02.017 [Online ahead of print].
 - 13 Kreibich M, Siepe M, Beyersdorf F, Czerny M. Spontaneous leakage of the Thoraflex frozen elephant trunk prosthesis. *Interact Cardiovasc Thorac Surg* 2019;**28**:327–9.
 - 14 Kreibich M, Desai N, Bavaria J, Szeto WY, Vallabhajosyula P, Itagaki R, et al. Preoperative neurological deficit in acute type A aortic dissection. *Interact Cardiovasc Thorac Surg* 2020;**30**: 613–9.
 - 15 Weisscher N, Vermeulen M, Roos YB, de Haan RJ. What should be defined as good outcome in stroke trials; a modified Rankin score of 0–1 or 0–2? *J Neurol* 2008;**255**:867–74.
 - 16 Axtell A, Eagleton M, Conrad M, Isselbacher E, Sundt T, Jassar A. Total arch replacement and frozen elephant trunk for acute complicated type B dissection. *Ann Thorac Surg* 2020 Feb 18. doi: 10.1016/j.athoracsur.2019.12.077 [Online ahead of print].
 - 17 Matsuzaki Y, Yamasaki T, Hohri Y, Hiramatsu T. Surgical strategies for type B aortic dissection by frozen elephant trunk. *Ann Vasc Dis* 2019;**12**:473–9.
 - 18 Charchyan E, Breshenkov D, Belov Y. Follow up outcomes after the frozen elephant trunk technique in chronic type B dissection. *Eur J Cardiothorac Surg* 2020;**57**:904–11.
 - 19 Chen Y, Zhang S, Liu L, Lu Q, Zhang T, Jing Z. Retrograde type A aortic dissection after thoracic endovascular aortic repair: a systematic review and meta-analysis. *J Am Heart Assoc* 2017;**6**: e004649.
 - 20 Williams JB, Andersen ND, Bhattacharya SD, Scheer E, Piccini JP, McCann RL, et al. Retrograde ascending aortic dissection as an early complication of thoracic endovascular aortic repair. *J Vasc Surg* 2012;**55**:1255–62.
 - 21 Rylski B, Perez M, Beyersdorf F, Reser D, Kari FA, Siepe M, et al. Acute non-A non-B aortic dissection: incidence, treatment and outcome. *Eur J Cardiothorac Surg* 2017;**52**:1111–7.
 - 22 Sievers HH, Rylski B, Czerny M, Baier ALM, Kreibich M, Siepe M, et al. Aortic dissection reconsidered: type, entry site, malperfusion classification adding clarity and enabling outcome prediction. *Interact Cardiovasc Thorac Surg* 2020;**30**:451–7.
 - 23 Lombardi JV, Hughes GC, Appoo JJ, Bavaria JE, Beck AW, Cambria RP, et al. Society for vascular surgery (SVS) and society of thoracic surgeons (STS) reporting standards for type B aortic dissections. *Ann Thorac Surg* 2020;**109**:959–81.
 - 24 Trimarchi S, de Beaufort HWL, Tolenaar JL, Bavaria JE, Desai ND, Di Eusanio M, et al. Acute aortic dissections with entry tear in the arch: a report from the International Registry of Acute Aortic Dissection. *J Thorac Cardiovasc Surg* 2019;**157**:66–73.

Eur J Vasc Endovasc Surg (2021) 61, 113

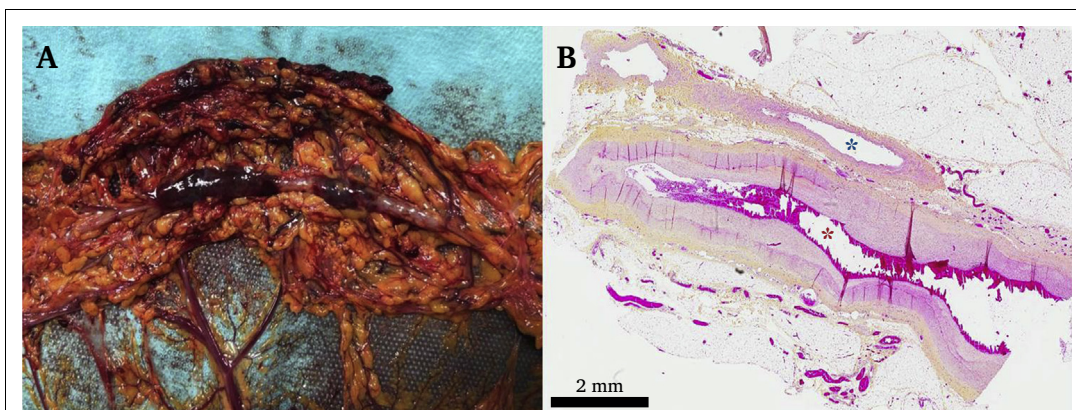
COUP D’OIL

Ruptured Epiploic Artery Aneurysm Associated With Fibromuscular Dysplasia

Iris Naudin^{a,b,*}, Nellie Della-Schiava^{a,b}

^a Vascular Surgery, Louis Pradel Hospital, Hospices Civils de Lyon, Bron, France

^b Université Claude Bernard Lyon 1, Faculté de Médecine Rockefeller, Lyon, France



A 69 year old woman presented with severe abdominal pain and haemodynamic instability. Computed tomography (CT) angiography demonstrated multiple ectasia of the visceral arteries and a massive haemoperitoneum. An exploratory laparotomy was performed. Multiple epiploic artery aneurysms with a string of beads aspect were found (A), one of which had ruptured. Total omentectomy was performed, and she was discharged from hospital after one week. Histopathological analysis of the epiploic arteries indicated fibromuscular dysplasia with intimal thickening (B, red asterisk) with no lesion of the vein (B, blue asterisk). Annual surveillance with a whole body CT scan has been arranged.

* Corresponding author. Vascular surgery, Hôpital Louis Pradel, 59 boulevard Pinel, Bron 69500, France.

E-mail address: Iris.naudin@chu-lyon.fr (Iris Naudin).

1078-5884/© 2020 European Society for Vascular Surgery. Published by Elsevier B.V. All rights reserved.

<https://doi.org/10.1016/j.ejvs.2020.07.077>